



## Porsche 997/987 Key Kit Instructions

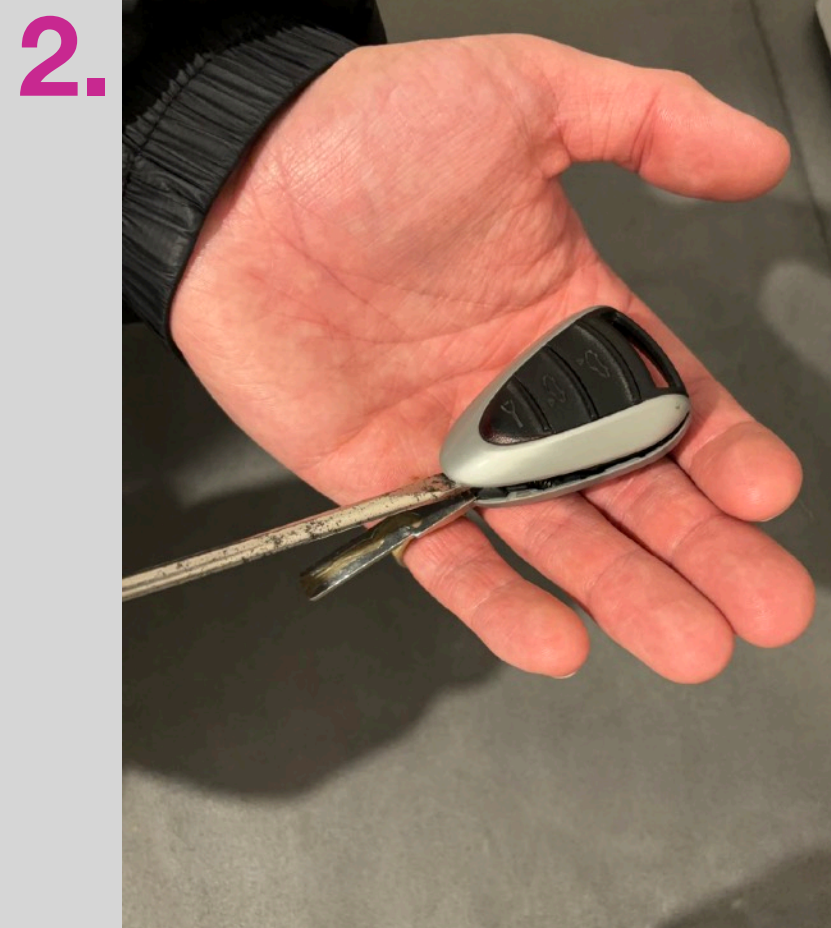
Get in touch for any questions or support:

Email:  
[josh@bdpuk.co.uk](mailto:josh@bdpuk.co.uk)  
Instagram:  
[@black\\_dog\\_projects](https://www.instagram.com/black_dog_projects)  
Website:  
[www.bdpuk.co.uk](http://www.bdpuk.co.uk)



Tools required:

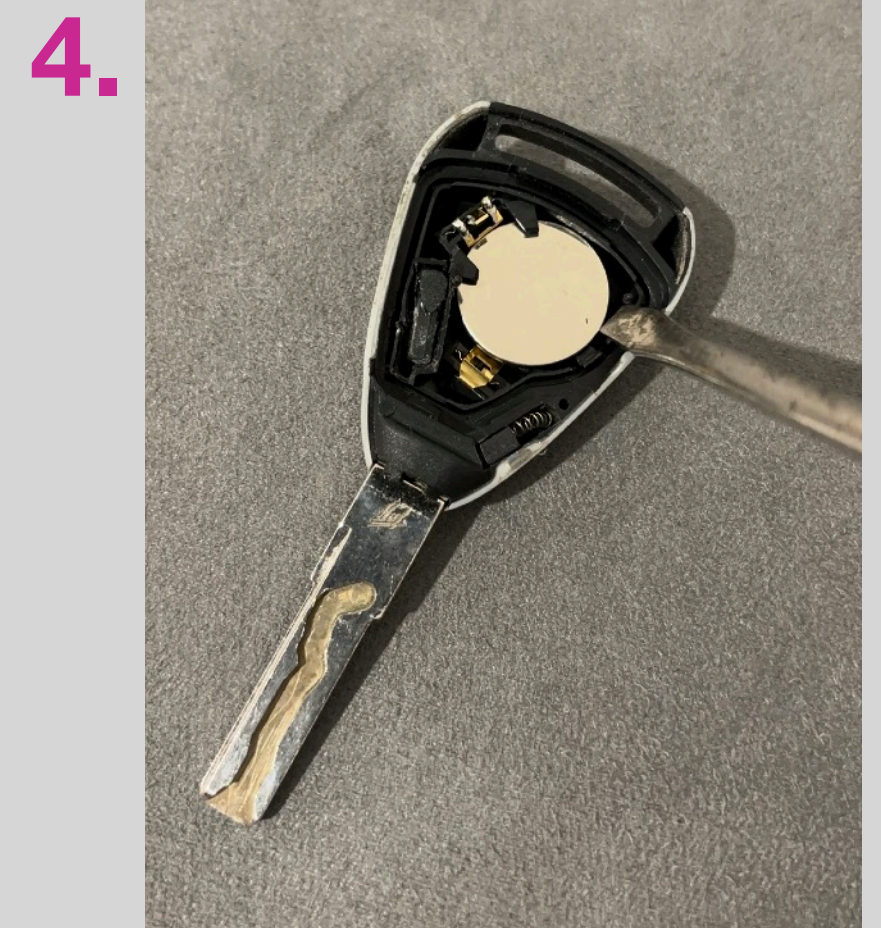
- Screw driver
- Sharp blade
- Tweezers
- Adhesive (badge)



Remove the lid from the casing using the screw driver.



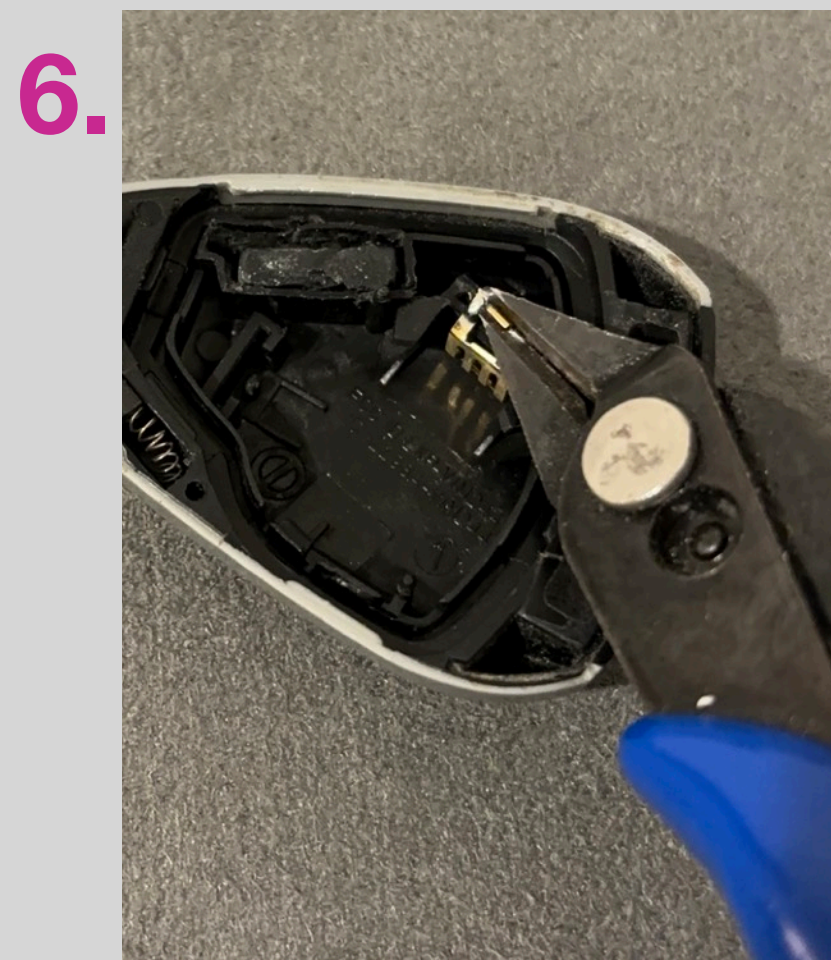
Opening the two sides, remove the PCB from the rubber cover.



Remove the coin battery from the casing.



Using tweezers or grips, carefully remove both of the brass connectors. Be sure to hold the connectors where there is more material to avoid damage.



Pull back the slider and remove the key blade.



Cary out this step with care to repeatedly score around the edges of the transponder pill.





## Porsche 997/987 Key Kit Instructions

Get in touch for any questions or support:

Email:  
[josh@bdpuk.co.uk](mailto:josh@bdpuk.co.uk)  
Instagram:  
[@black\\_dog\\_projects](https://www.instagram.com/black_dog_projects)  
Website:  
[www.bdpuk.co.uk](http://www.bdpuk.co.uk)

9.



Using the screw driver you can pry the transponder pill out of the casing. Note which way the pill points.

10.



After disassembly is complete, you should have key blade, PCB, transponder pill, contactors and battery.

11.



Provided in your kit, you will have a BDP crest of which you can replace with an OEM option.

12.



Insert the key blade and push the pin into the forward position to lock the key in place.

13.



Carefully press the brass contactors into place, using the screw driver to gently push them firmly into the fittings. The coin battery can then go in. Add the transponder pill back to the casing. Angled face pointed forward and down (towards the badge).

14.



15.



Place the pointed end into the side with a single hook. Pushing the rear in last.

16.



Once both sides are assembled the two halves are ready to go together.



17.



Using the slot on the button side of case, place the back end down first.

18.



Evenly press down to fit the two halves together, where they should 'snap' together.

19.



In a circular motion, press around the key casing so that the case is properly sealed.

20.



Add your OEM or BDP badge. For a new OEM badge, please follow the links on the right.

21.



**With any battery replacement - your key may need a reset.** To do this, simply place the key into the ignition and turn to engage the ignition (not starting the car). Press and hold the lock button for 15 seconds. The horn may sound when this step is complete.

22.



OEM Key Badges available here:

Suncoast Parts [HERE](#)

Design911 [HERE](#)

Keep this instruction set for a 1 year warranty on plastic components.

Please remember to leave a review. Your support helps us grow and develop new projects